



# Semantic Feature Analysis

## Instructions

Semantic Feature Analysis (SFA) is a structured therapy approach that helps clients improve word retrieval by describing and connecting the features of a target word. It works by activating the semantic network related to that word—making it more accessible and increasing the likelihood it can be retrieved during communication.<sup>1</sup>

Whether you're targeting naming, vocabulary expansion, or categorization, these ready-to-use templates offer a flexible framework for building expressive language and supporting meaningful communication.

### Use this PDF to:

- Target expressive language and word-finding goals
- Guide clients in using descriptive language and making personal connections
- Promote generalization across everyday settings and routines

You'll have access to two template formats—**table and web map**—so you can choose the one that best fits your client's needs. Each page includes a visual, a structured set of prompts, and space to work through the features of each word together.

## How to Use Semantic Feature Analysis

To complete a Semantic Feature Analysis, start by presenting the target word or object. Then, work through each prompt with your client to explore its features and strengthen connections for word retrieval. Use the table or web map template to guide your session.

### Steps to Complete SFA:

1. **Introduce the target word:** Write the word in the center of the web map or at the top of the table.
2. **Work through the features:** Use the prompts to describe the category, function, location, description, parts, associations, and personal connections.
3. **Encourage elaboration:** Aim for multiple responses in each category to build deeper connections.
4. **Review together:** Summarize the features and discuss how these connections support communication goals.
5. **Promote generalization:** Encourage clients to apply these connections in everyday conversations and settings.

### Cueing Techniques to Support Word Retrieval:

- **Phonemic cues:** Offer the first sound or syllable of the word.
- **Semantic cues:** Describe the word's meaning or use.
- **Forced-choice prompts:** Present options to help narrow down the answer.
- **Visual supports:** Use images, real objects, or gestures.
- **Error recognition:** Provide choices that include both correct and incorrect options to support self-correction.

## Clinician Tips for Success

- Pair these worksheets with real-life objects to boost relevance and engagement.
- Incorporate visual supports or augmentative and alternative communication (AAC) tools to strengthen comprehension and expression.
- Use this activity in both individual and group sessions—especially when targeting cognitive-communication or expressive language skills.



# Semantic Feature Analysis



## Group / Category

What category is it in?

---

## Function / Use

What is it used for?

---

## Location / Context

Where do you find it?

---

## Description

What does it look, feel, or sound like?

---

## Parts / Components

What is it made of or what are its parts?

---

## Association

What is it like or what does it remind you of?

---

## Personal Connection

What does it make you think of?

---



# Semantic Feature Analysis



## Group / Category

What category is it in?

---

## Function / Use

What is it used for?

---

## Location / Context

Where do you find it?

---

## Description

What does it look, feel, or sound like?

---

## Parts / Components

What is it made of or what are its parts?

---

## Association

What is it like or what does it remind you of?

---

## Personal Connection

What does it make you think of?

---



# Semantic Feature Analysis



## Group / Category

What category is it in?

---

## Function / Use

What is it used for?

---

## Location / Context

Where do you find it?

---

## Description

What does it look, feel, or sound like?

---

## Parts / Components

What is it made of or what are its parts?

---

## Association

What is it like or what does it remind you of?

---

## Personal Connection

What does it make you think of?

---



# Semantic Feature Analysis



## Group / Category

What category is it in?

---

## Function / Use

What is it used for?

---

## Location / Context

Where do you find it?

---

## Description

What does it look, feel, or sound like?

---

## Parts / Components

What is it made of or what are its parts?

---

## Association

What is it like or what does it remind you of?

---

## Personal Connection

What does it make you think of?

---



# Semantic Feature Analysis



## Group / Category

What category is it in?

---

## Function / Use

What is it used for?

---

## Location / Context

Where do you find it?

---

## Description

What does it look, feel, or sound like?

---

## Parts / Components

What is it made of or what are its parts?

---

## Association

What is it like or what does it remind you of?

---

## Personal Connection

What does it make you think of?

---



# Semantic Feature Analysis



## Group / Category

What category is it in?

---

## Function / Use

What is it used for?

---

## Location / Context

Where do you find it?

---

## Description

What does it look, feel, or sound like?

---

## Parts / Components

What is it made of or what are its parts?

---

## Association

What is it like or what does it remind you of?

---

## Personal Connection

What does it make you think of?

---



# Semantic Feature Analysis



## Group / Category

What category is it in?

---

## Function / Use

What is it used for?

---

## Location / Context

Where do you find it?

---

## Description

What does it look, feel, or sound like?

---

## Parts / Components

What is it made of or what are its parts?

---

## Association

What is it like or what does it remind you of?

---

## Personal Connection

What does it make you think of?

---





# Semantic Feature Analysis



## Group / Category

What category is it in?

---

## Function / Use

What is it used for?

---

## Location / Context

Where do you find it?

---

## Description

What does it look, feel, or sound like?

---

## Parts / Components

What is it made of or what are its parts?

---

## Association

What is it like or what does it remind you of?

---

## Personal Connection

What does it make you think of?

---



# Semantic Feature Analysis



## Group / Category

What category is it in?

---

## Function / Use

What is it used for?

---

## Location / Context

Where do you find it?

---

## Description

What does it look, feel, or sound like?

---

## Parts / Components

What is it made of or what are its parts?

---

## Association

What is it like or what does it remind you of?

---

## Personal Connection

What does it make you think of?

---



# Semantic Feature Analysis



## Group / Category

What category is it in?

---

## Function / Use

What is it used for?

---

## Location / Context

Where do you find it?

---

## Description

What does it look, feel, or sound like?

---

## Parts / Components

What is it made of or what are its parts?

---

## Association

What is it like or what does it remind you of?

---

## Personal Connection

What does it make you think of?

---



# Semantic Feature Analysis



## Group / Category

What category is it in?

---

## Function / Use

What is it used for?

---

## Location / Context

Where do you find it?

---

## Description

What does it look, feel, or sound like?

---

## Parts / Components

What is it made of or what are its parts?

---

## Association

What is it like or what does it remind you of?

---

## Personal Connection

What does it make you think of?

---



# Semantic Feature Analysis - Blank

## Group / Category

What category is it in?

---

## Function / Use

What is it used for?

---

## Location / Context

Where do you find it?

---

## Description

What does it look, feel, or sound like?

---

## Parts / Components

What is it made of or what are its parts?

---

## Association

What is it like or what does it remind you of?

---

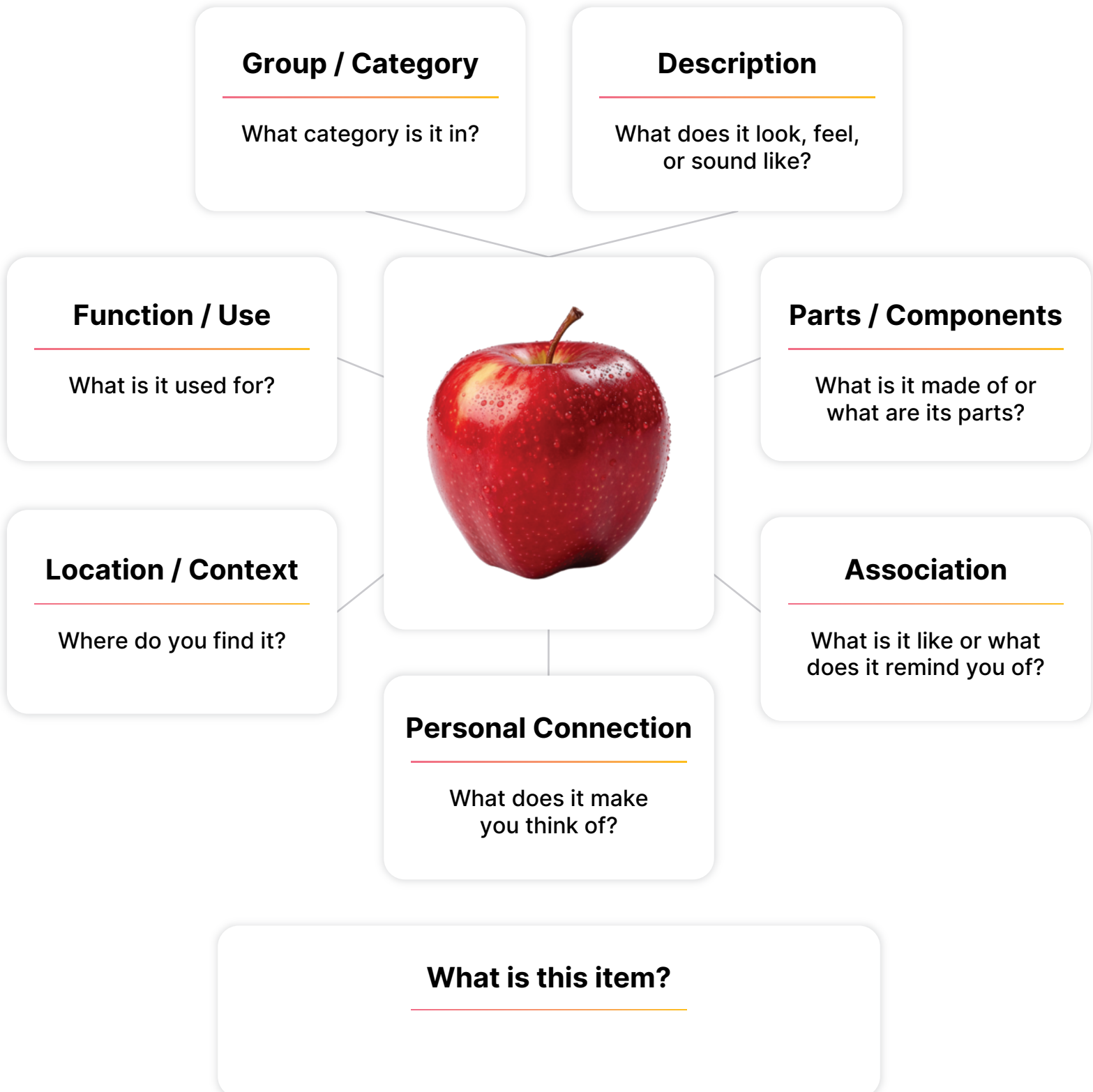
## Personal Connection

What does it make you think of?

---



# Semantic Feature Analysis - Web Map





# Semantic Feature Analysis - Web Map





# Semantic Feature Analysis - Web Map





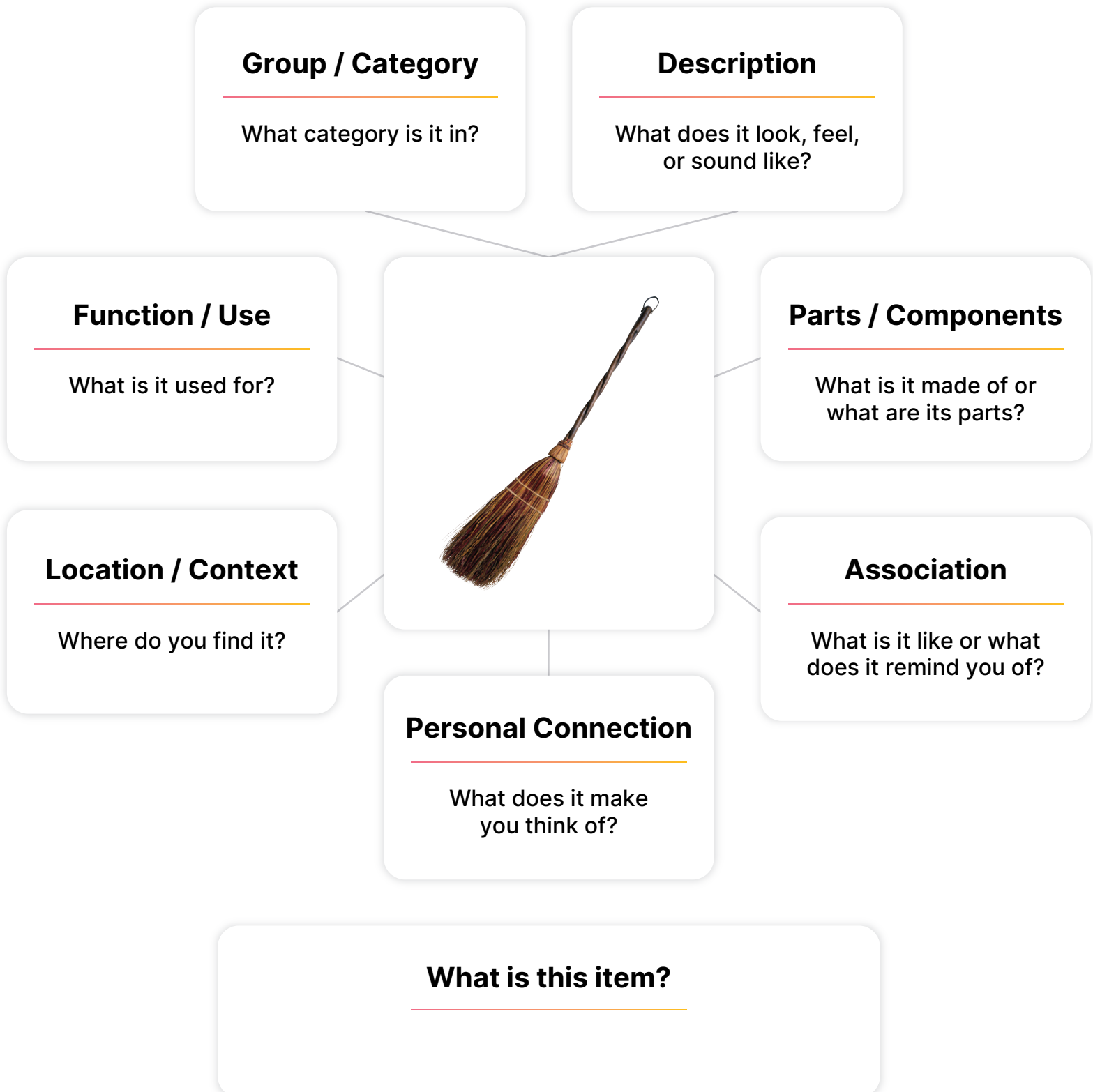


# Semantic Feature Analysis - Web Map



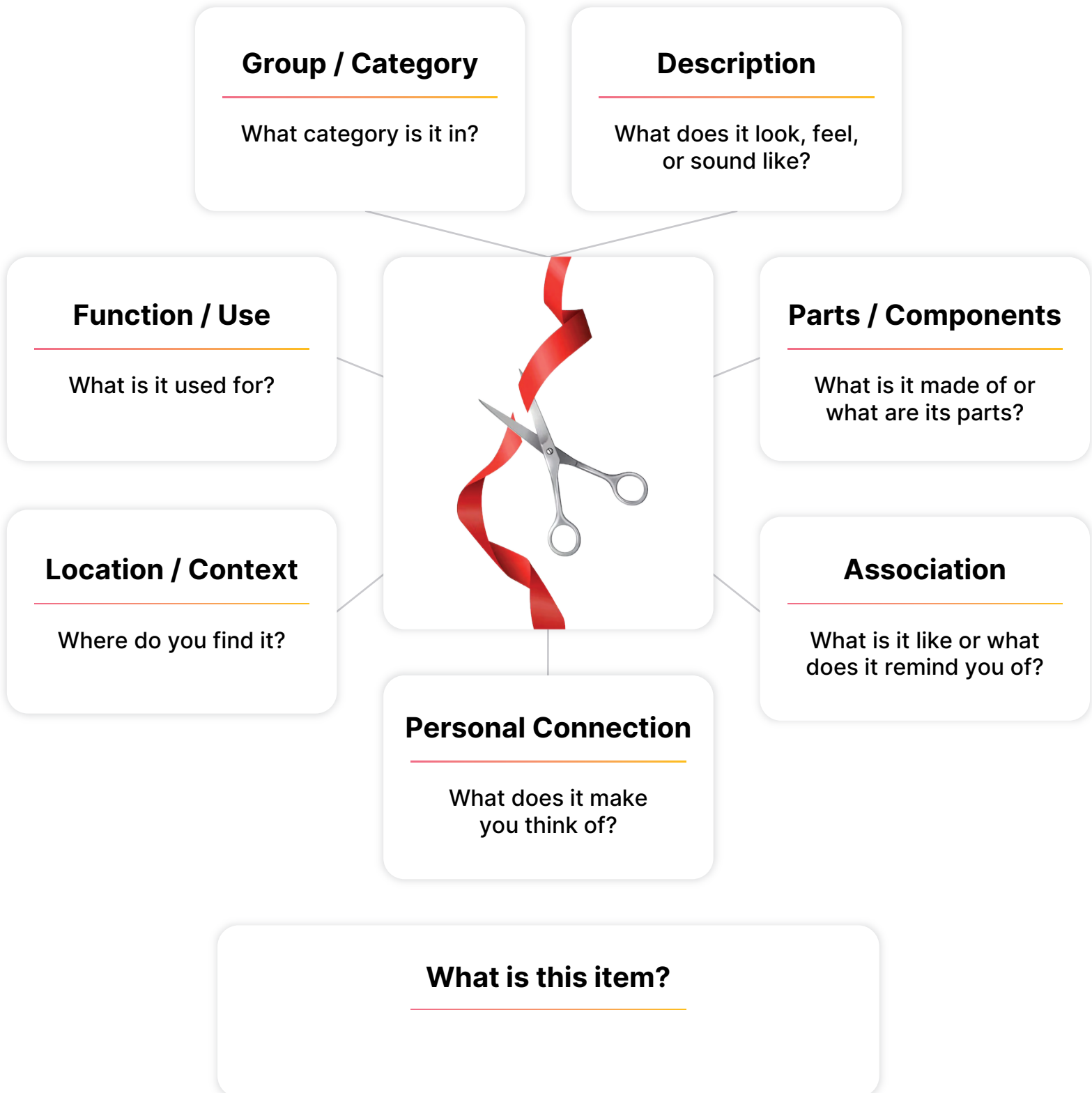


# Semantic Feature Analysis - Web Map





# Semantic Feature Analysis - Web Map





# Semantic Feature Analysis - Web Map



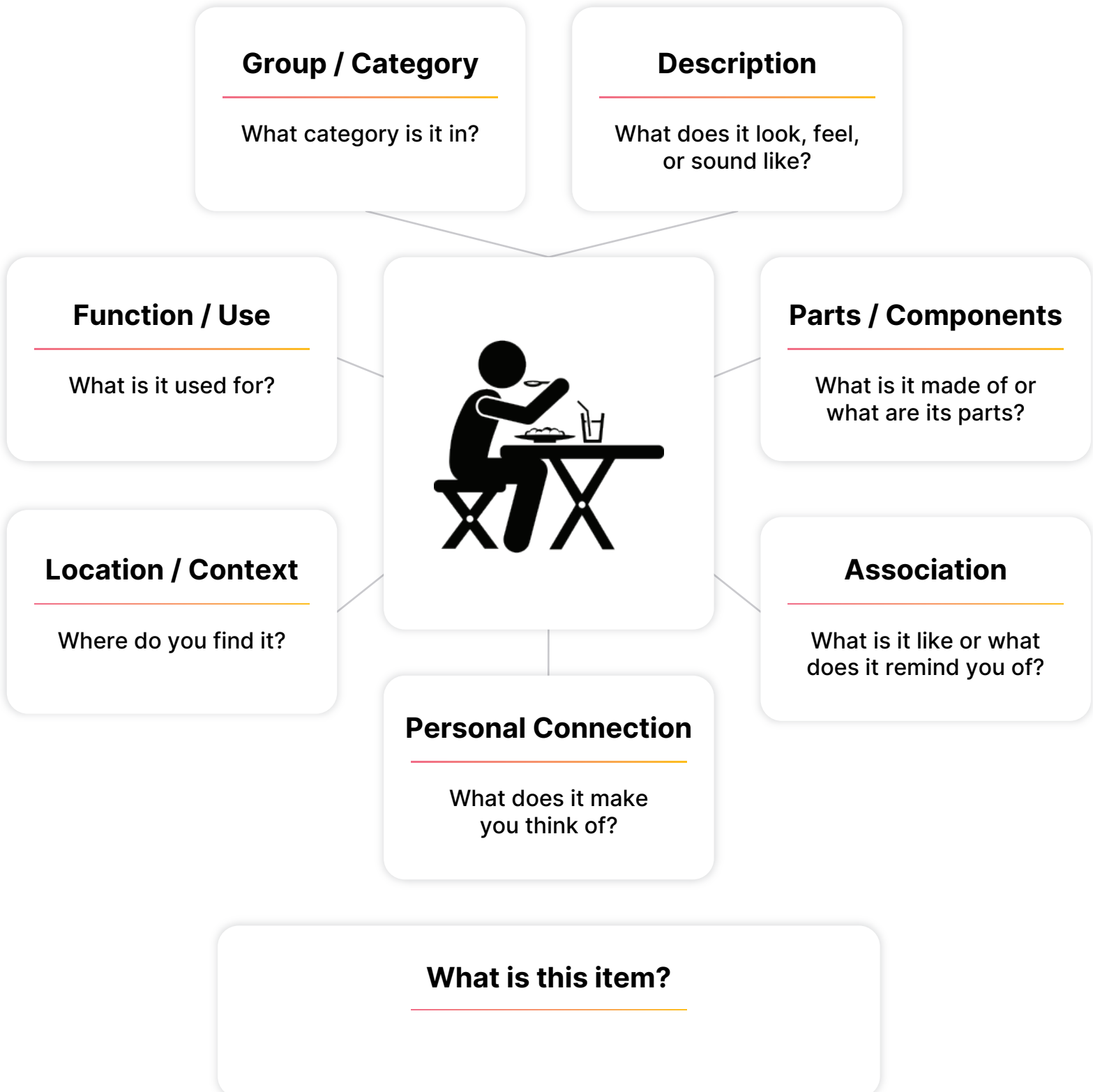


# Semantic Feature Analysis - Web Map



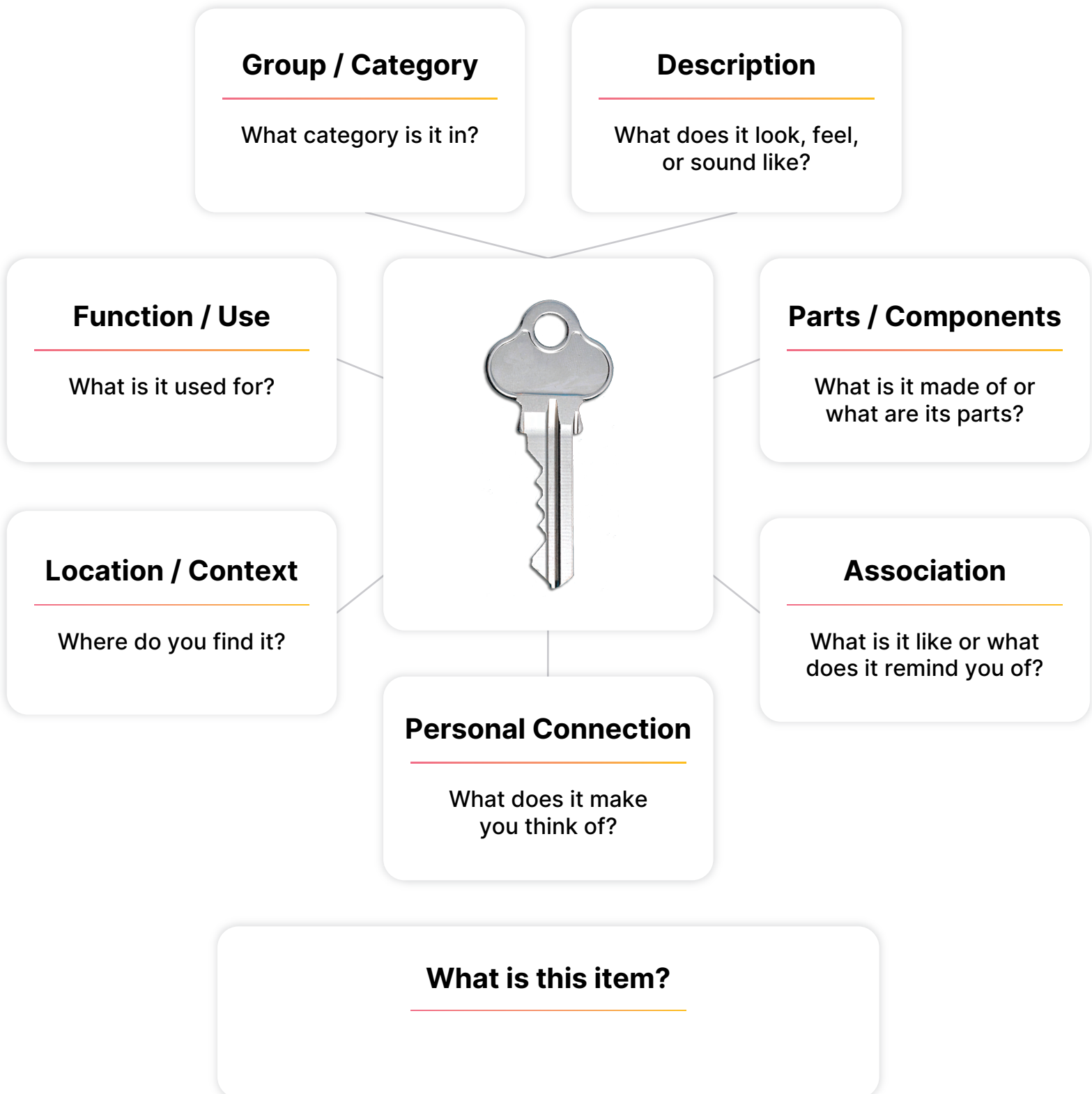


## Semantic Feature Analysis - Web Map





# Semantic Feature Analysis - Web Map





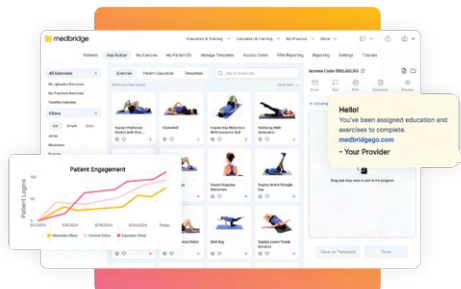
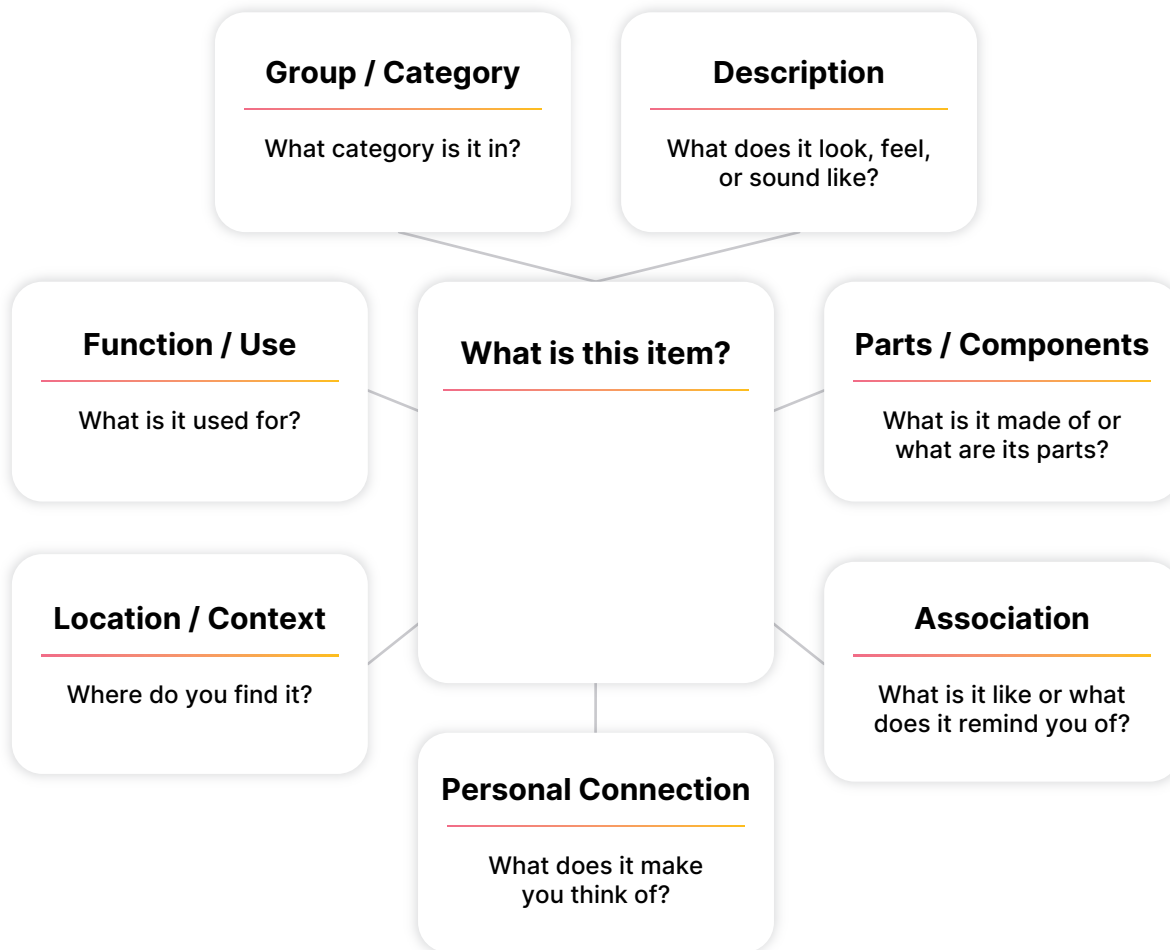
# Semantic Feature Analysis - Web Map







# Semantic Feature Analysis - Web Map Blank



Drive behavior change and boost adherence with Medbridge HEP

- Save time with smart search, templates, and one-click documentation.
- Engage patients with over 8,000 video exercises delivered on a mobile app.
- Improve outcomes with patient feedback, messaging, and adherence tracking.
- Learn more at <https://bit.ly/3YaZuDh>

## References

1. <https://www.asha.org/practice-portal/clinical-topics/aphasia/>