



Peripherally Inserted Central Catheter (PICC) Removal

Before You Begin



Before You Begin

It is important to make introductions, inquire to find out what the patient and caregiver already know about the procedure, and confirm their understanding of the procedure process.

MEDBRIDGE

- Review the plan of care and provider's orders.
- Introduce yourself, identify the patient, and ask the patient (and caregiver) how they would like to be addressed.
- Inquire to find out what they already know about the procedure, and educate as needed.
- Confirm the patient's understanding of the procedure process, and gain informed consent.
- Perform hand hygiene.
- Instruct and assist the patient into a supine position.
- Prepare a clean area near the patient, such as a table. Wash the table and let it dry, and then lay down a clean barrier.
- Gather the equipment, open up the packages carefully, and place/organize them on the barrier.
 - Make sure to perform hand hygiene whenever reaching back into the medical bag.
- Always follow organizational infection control policies.

Step 1: Remove the PICC

Step 1 | Remove the PICC

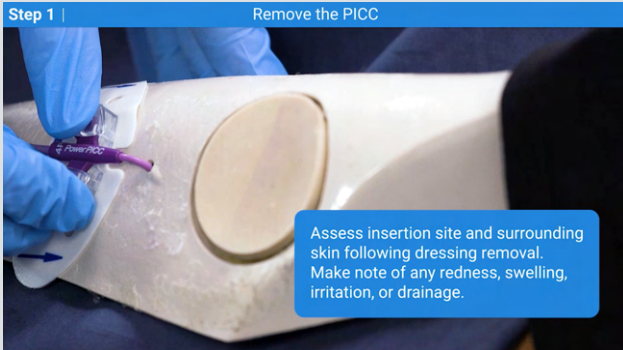


- Perform hand hygiene, and don clean gloves.
- Ensure that the PICC is clamped, if present, and that the needleless connector is in place.
- Slowly and gently remove the dressing from the PICC insertion site, pulling from the bottom toward the top to avoid inadvertently pulling the catheter out.
- Assess the insertion site and surrounding skin following removal of the dressing, making a mental note of any redness, swelling, irritation, or drainage.
- Remove the securement device according to the manufacturer's instructions, or remove sutures if present.
- Hold sterile gauze gently over the PICC insertion site with your nondominant hand.



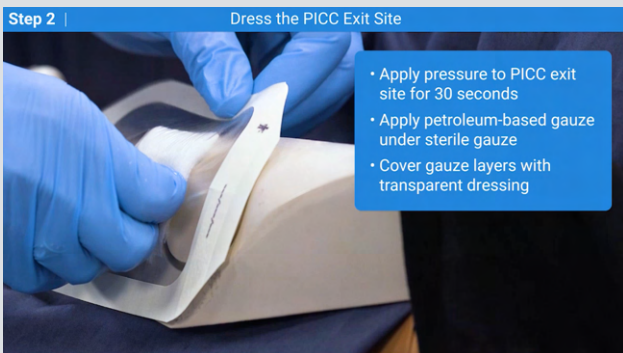
Peripherally Inserted Central Catheter (PICC) Removal

Step 1: Remove the PICC



- Instruct the patient to perform the Valsalva maneuver or hold their breath.
 - If the patient is unable to hold their breath, plan to remove the PICC as the patient exhales.
- Remove the PICC slowly and gently with your dominant hand, applying pressure to the PICC exit site with sterile gauze.
- **If you encounter any resistance, STOP PICC removal**, place sterile gauze dressing over the site, and employ interventions, such as placing a warm compress above the site, performing relaxation techniques, or elevating the arm.
 - Reattempt removal after about 15 minutes.
 - If unable to remove, employ the above interventions again.
 - For continued resistance, re-dress the PICC site, and notify the provider.

Step 2: Dress the PICC Exit Site

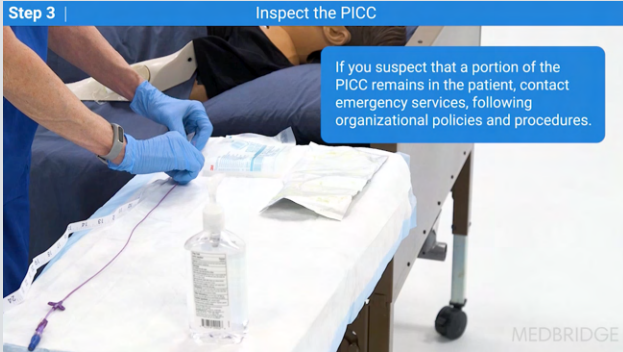


- Continue to apply pressure to the PICC exit site for at least 30 seconds or until hemostasis is achieved.
- Apply petroleum-based gauze under the sterile gauze to seal the PICC exit site.
- Cover the gauze layers with a transparent dressing.



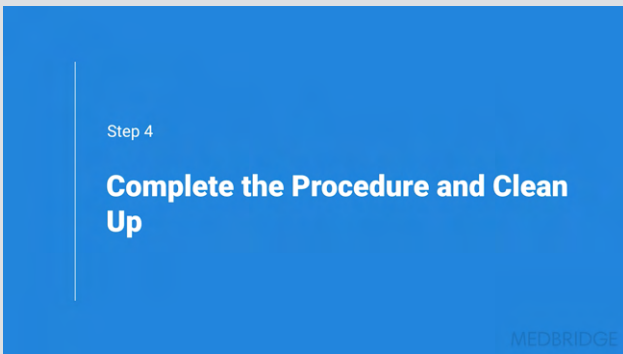
Peripherally Inserted Central Catheter (PICC) Removal

Step 3: Inspect the PICC



- Check that the tip is intact and not jagged.
- Check that the length of the catheter is consistent with the original documented length, if available in the PICC insertion report.
 - If you suspect that a portion of the PICC remains in the patient, contact emergency services, following organizational policies and procedures.

Step 4: Complete the Procedure and Clean Up



- Dispose of used gloves, and perform hand hygiene.
- Assess the patient for tolerance of and any adverse reactions to the procedure.
- Instruct the patient to remain in a lying position for 30 minutes following removal and to leave the dressing in place for at least 24 hours.
- Discard all waste and disposable supplies according to organizational policies and state and local guidelines.
- Clean and disinfect equipment as appropriate based on organizational policies and procedures.
- Document the procedure. Follow up with the referring provider directly on noted abnormalities as indicated.

Home health procedures and training videos in the field

Access hundreds of clinical procedures optimized for tablet and mobile, including:

- Wound care
- Ostomy/ileostomy assessments
- Peripheral IV catheters and more

Demo today: medbridge.com/clinical-procedures

Easy, fast, and more reliable than YouTube or Google.

Just-in-time guidance, accessible anywhere—even a patient's driveway.

